

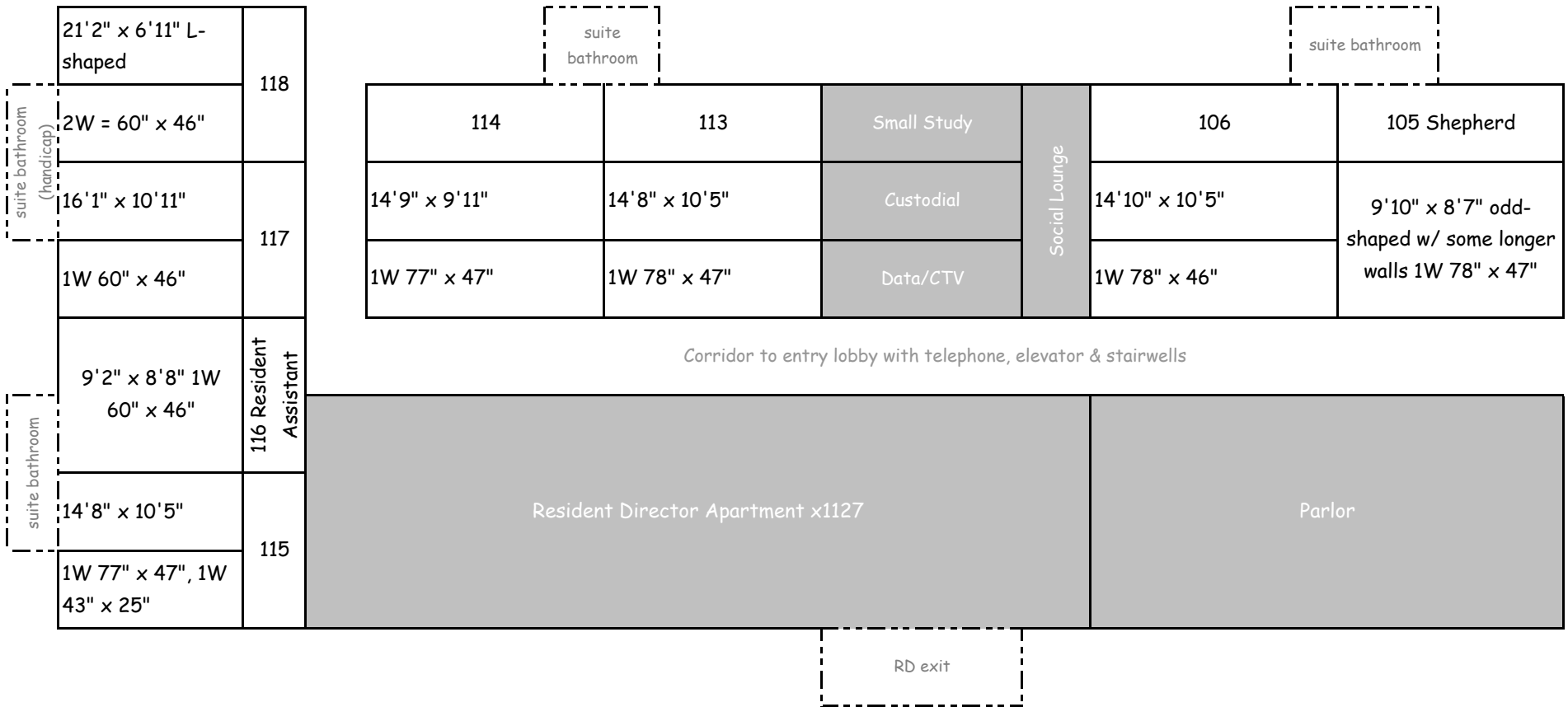
Melrose Hall

Total Capacity--75

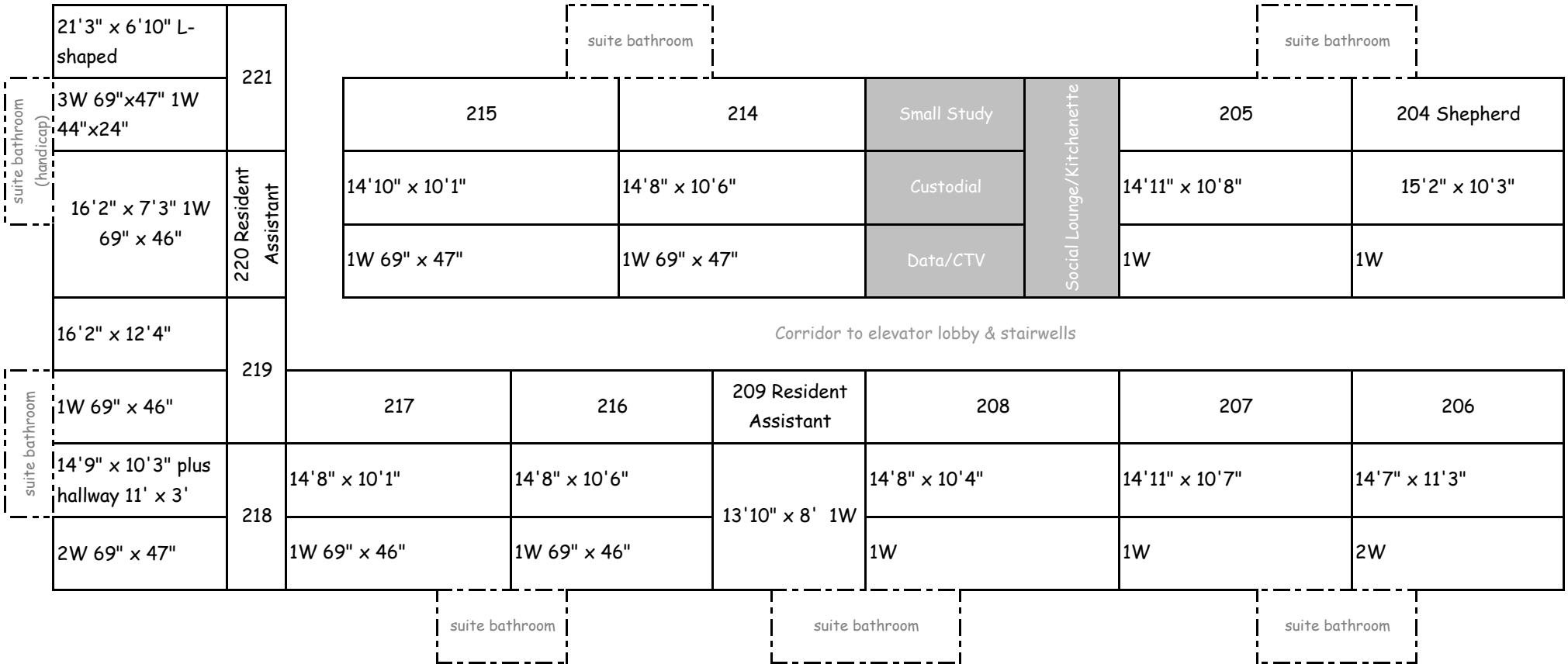
Terrace Level (9)

Unfinished Space	Trash Room	Laundry Room	Data/CTV	Storage	Mechanical	Kitchen	
	Corridor			Custodial		Bathroom	Corridor
	Corridor to lobby, elevator & outer stairwell						
Lobby	Stairwell	PVT BR (handicap)	11	10 Resident Assistant	9	8	7 Shepherd
			mechanical	14'5" x 10'5"	14'5" x 7'3" 1W-69" x 46"	14'5" x 10'7"	14'5" x 10'5"
			2W = 69" x 46.5"		1W = 69" x 46"	1W = 69" x 46"	1W = 69" x 46"
				suite bathroom		suite bathroom	

First (14)



Second (26)



Third (26)

